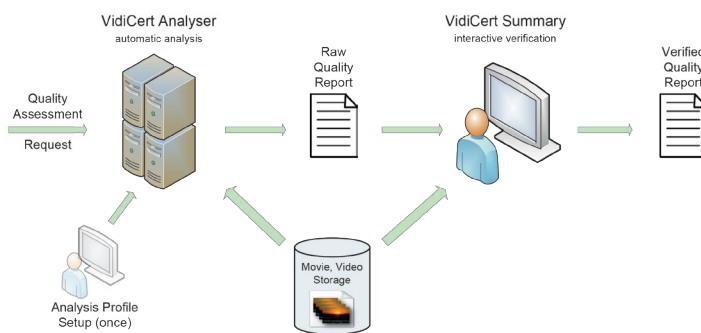


VidiCert™ Data Sheet

Workflow

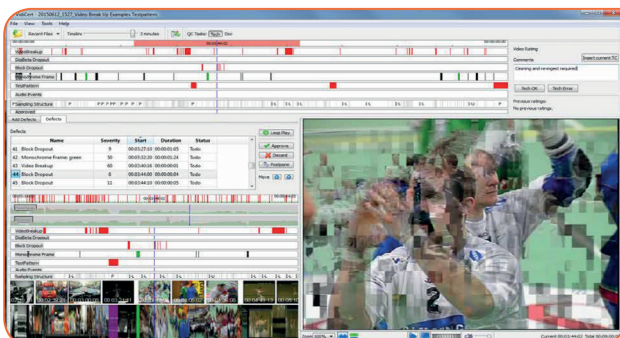
VidiCert supports efficient workflows in the following ways

- Automate quality assessment of video essence by usage of automatic quality detection tools
- Analysis Profiles for customizing detection tools
- Efficient interactive verification tools for minimizing eyeball time of audio visual quality and content checks
- Workflow integration via web service and drop folder



Interactive Audio Visual Quality Verification

- Advanced summarisation and navigation by various timeline based metadata views
- Efficient human quality judgement
- Job-time optimisation – target human effort to the most severe defect occurrences
- Fully customizable user interface (including full screen video player support on second monitor)
- Frame accurate player with desktop based zoom, field playback and audio selection, or SDI output
- Interactive defect annotation
- Rating support for multistage QC



Automatic AudioVisual Quality Detection Tools

Resolution independent and reliable defect detection with highly optimised, GPU accelerated tools:

- Noise Level (electronic & film grain)
- Blurriness Level / Out of Focus / Upscaling
- Dust / Dirt / Hair Level
- Scanning Type, Field Order, Cadence
- Freeze Frame
- Digital BETACAM™ Dropout
- Block Dropout, Macroblocking
- Video Breakup (major video disruptions)
- Black Bar, VITC Error
- Test Pattern, Monochrome / Black Frame
- Luminance Range, Gamut / Clipping Error
- Silence
- Dolby®E™

- Others under development - please ask
- If you need a specific solution we are here to implement it



Examples for various video impairments: noise (left), video breakup (middle), block dropout (right)

System Interfaces

Video/Movie Input Formats

- MPEG-2 (incl. IMX50, XDCAM HD and AS-11 SD) in MXF and MPEG-2 program stream container
- MPEG-4 AVC/H.264 (incl. AS-11 HD and X) in MXF, AVI, MP4 and MOV container
- JPEG2000 in MXF container (SAMMA format)
- Image sequences (DPX and others)
- ProRes in MOV container
- others on request

Quality Metadata Output Formats

- XML Report fully compliant to MPEG-7/AVDP standard
- PDF Report with summarised and detailed defect info
- DIAMANT Restoration Report with time based defect info

System Requirements

- Operating System: Windows 10/8/7, 64 bit
- Graphics Board: nVIDIA board with CUDA support
- SDI Output: DeckLink Monitor card from Blackmagic Design